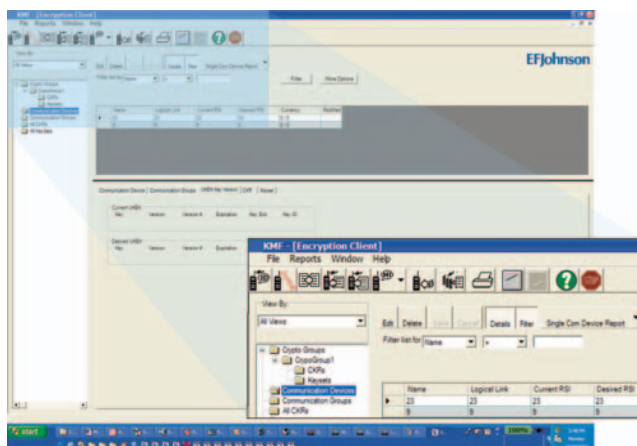
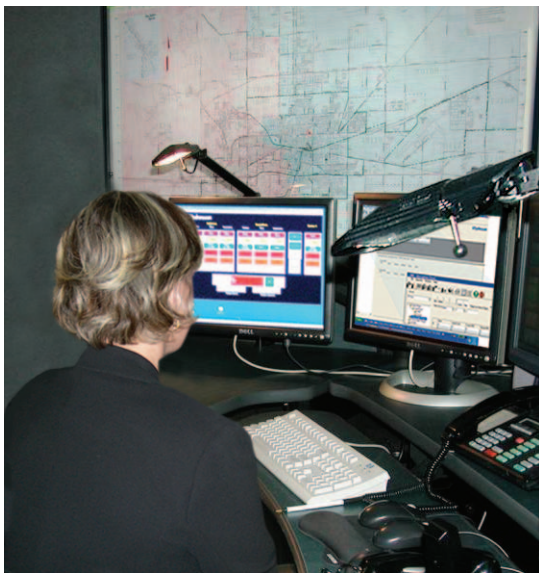


### The Right Choice for Infrastructure

Building out a Project 25 network can be easy, when you make the right choice. Meet the Conventional IP25™ Infrastructure System from EFJohnson. Conventional IP25 provides the secure, reliable infrastructure for your communications needs — today and tomorrow.



Conventional IP25 provides a flexible, cost-effective solution for conventional systems. It delivers a complete Project 25 compliant solution that provides:

**Scalability** – cost effective for small, medium and large system deployments

**Expandability** – new features and capabilities easily added – many with only a new software load

**Graceful Migration** – ability to migrate from analog to digital systems and to future Project 25 enhancements

Using industry-standard VoIP technology, Conventional IP25 provides a secure, reliable infrastructure that you can always count on.

Whether you use Conventional IP25 with EFJohnson's proven portable and mobile radios or equipment from another supplier, you'll have a Project 25 network that fulfills your requirements and exceeds your expectations.

# Conventional IP25 Infrastructure Systems

## The Right Choice for Infrastructure



### Conventional IP25 Integrates These Elements:

- EFJohnson's powerful base station/repeaters
- Intuitive IP25 Digital Dispatch Console
- Secure Key Management Facility
- IP25 Voter

### 2600 Series Base Station/Repeaters

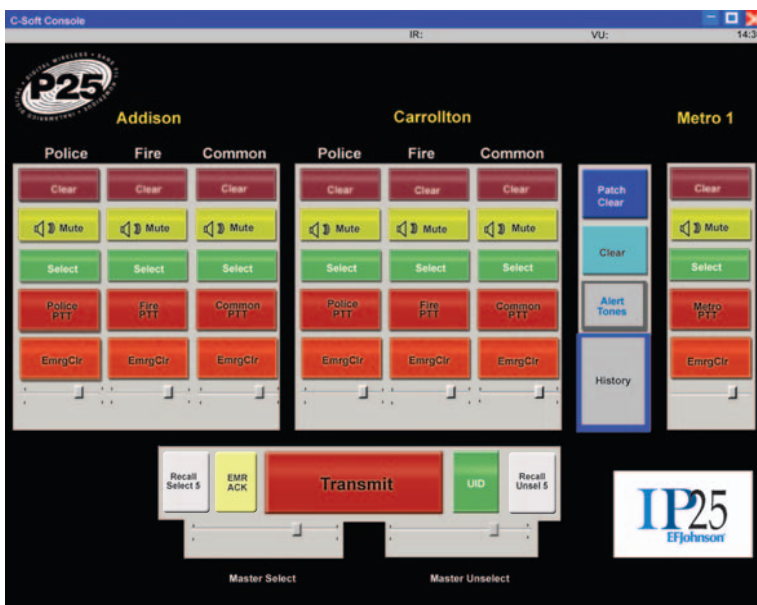
These powerful repeaters adaptively support communications of both analog and P25 digital subscriber equipment. For added convenience, the dual mode base station/repeaters interconnect throughout your network using industry-standard routers.

### IP25 Digital Dispatch Console

The EFJohnson IP25 Digital Dispatch Console is a software program that provides the interface into the IP25 packet network. You can manage your entire network from one place – anywhere you have a computer. The IP25 Digital Dispatch Console operates on any Windows®-based PC. Its intuitive graphical user interface will have you in complete control in no time. Communicate with P25 radios on your network on an individual basis, or establish talk-groups. The EFJohnson IP25 Digital Dispatch Console enables you to put more consoles in less space than ever before.

### Key Management Facility

Maintaining control over the radios on your network is a vital function. EFJohnson's Key Management Facility (KMF) enables you to control every P25 OTAR (Over the Air Re-keying) compliant radio on your network. OTAR capability allows you to re-key your radios in the field, wherever they are and whenever you need them. EFJohnson offers the industry's only PDA-based key loader, which extends your reach even further.



\* **Project 25** – Telecommunications Industry Association's (TIA) standard for digital 2-way radio technology. Originally created by the Association of Public Safety Communications Officials, International (APCO) in cooperation with the National Association of State Telecommunications Directors (NASTD) and the U.S. government to ensure interoperability between Federal, State, and local public safety agencies.

# Conventional IP25 Infrastructure Systems

## The Right Choice for Infrastructure

**IP25**<sup>™</sup>  
EFJohnson

**EFJohnson**<sup>®</sup>



### Network Interface Unit

The Network Interface Unit acts as the gateway between analog dispatch equipment, telephone interconnect devices, and conventional network digital systems.

### IP25 Voter

The IP25 Voter uses sophisticated voting algorithms to enhance receive audio quality by receiving and comparing the receive signals from various receivers and selecting the best signal.

### Interoperability

At EFJohnson, interoperability is more than just a catch phrase. It's the focus of our business. The IP25 systems are designed to work with any Project 25 compliant radios, not just those designed by EFJohnson. If your equipment is in compliance with P25, you can be certain that it will work on our system.

### VoIP Technology

Voice over Internet Protocol (VoIP) is the transfer of voice signals over Internet Protocol. IP is an industry standard protocol that was designed for use in interconnected systems of packet-switched computer communication networks. The advantage of VoIP is you can build out your network at an unprecedented speed, while deploying the latest network technology.

## Conventional IP25™ Infrastructure Systems

# The Right Choice for Infrastructure

### Conventional IP25 Systems

EFJohnson was the first to implement an IP-based, cost effective P25 Conventional System. Designed to support both analog and digital communication, Conventional IP25 enables the co-existence of legacy analog radios and equipment with advanced P25 digital radios and equipment. Instead of overhauling all existing radios in order to take advantage of digital P25 features and capabilities, Conventional IP25 allows you to migrate at your own pace.

Advanced features and wide area capability without the high cost of a trunking system.

The perfect marriage of two standards. Project 25's advanced first responder features and Internet Protocol's heterogeneous packet switched networking.

#### Highlights:

##### P25 Conventional System

- Adaptive Analog and Digital mode
- Adaptive 12.5 kHz and 25kHz
- Adaptive Clear or Encrypted communication

##### IP based architecture

- Intelligent IP based wide area routing
- No expensive Central Electronics Banks

##### Advanced features

- Individual calls
- Group calls
- Caller Validation
- Transmitter steering

##### Interoperability

- Multimode (Analog and Digital) Operation
- Cross mode calling (Analog - Digital)
- Cross band calling (UHF, VHF, 800)
- Ethernet to 4-wire conversion for legacy analog devices

##### Secure

- AES and DES End-to-end Encryption
- Over-the-Air Re-keying using IP25 Key Management Facility

### About EFJohnson

EFJohnson provides digital Project 25 compliant interoperable wireless communications systems solutions for federal, state and local agencies involved with homeland security and public safety. EFJohnson, founded in 1923, was one of the first developers of wireless communications products to be fully compliant with federal government interoperability specifications.

We design, manufacture and market conventional and trunked radio systems, land mobile radio repeaters, and mobile and portable radios. Our customers tell us that we provide rugged, reliable, and interoperable equipment along with a high level of customer service and support. For a communications system that you can rely on, and a company that is responsive and completely in tune with public safety, turn to one supplier – EFJohnson.

For more information, visit  
[www.EFJohnson.com](http://www.EFJohnson.com)  
800-328-3911

**EFJohnson®**  
Our Mission—Your Safety

1440 Corporate Drive, Irving, TX 75038-2401  
Phone: 972-819-0700, 1-800-328-3911 Fax: 972-819-0639  
[www.EFJohnson.com](http://www.EFJohnson.com)